

PW MILLAR LTD

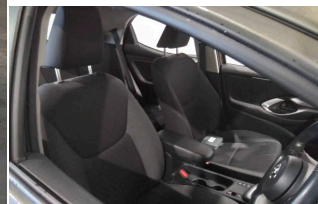
ESTABLISHED 1970

2022-72 | **TOYOTA YARIS**

1.5 VVT-h Design E-CVT Euro 6 (s/s) 5dr | Hybrid |
CVT | Titan Bronze



<https://www.pwmillar.co.uk>
01446 733248



£16,399

From **£310** per month PCP

Mileage **7,629 miles**

Fuel **Hybrid**

Engine **1.5 litre**

Transmission **CVT**

Gears **1**

Insurance group **14E**

SPECIFICATIONS

Emergency brake light system (EBS)	Hybrid energy display	Rear roof spoiler
Glovebox	Vehicle Stability Control (VSC)	Soft touch instrument panel
2x Master key	4 speakers	16" 5 spoke black machined face alloy wheels
ABS+EBD+Brake assist	Tailgate	Turning signal integrated indicators in door mirrors
Data Communication Module (DCM) connected services	Remote powered central double locking doors	Toyota Touch 3 system with DAB radio
Space saver spare wheel	Front seatbelt reminder	Electric power steering
Rear wiper	60/40 split folding rear seat	Alarm/immobiliser
USB connection	3 point seatbelts on all rear seats	Colour binocular inspired displays with digital speedometer
Body coloured door mirrors	Isofix seat fixing	9" Multimedia touch display
Front passenger airbag on/off switch	Reversing camera	Manual headlight levelling
Shopping bag hooks	Supplemental Restraint System (SRS) 8 airbags	7" Digital Combimeter
LED front fog lights	Coat hooks in rear grab handles	Rear seat belt reminder
Adjustable speed limit with speed warning	LED High mounted stop lamp	Height adjustable driver's seat
Tyre pressure warning system	Smartphone integration with Apple CarPlay and Android auto	Shark fin antenna
Grey roof lining	Hill start assist control (HAC)	Multi information display switches on steering wheel
LED Headlights	Active headrests	Toyota Safety Sense 3 with over the air updates
E-call	LED rear light guide	Single front passenger seat

TECHNICAL

Performance	
0-100 kmh (62 mph)	9.7 s
Top speed	109 mph
Emissions Ice	
CO ₂ (g/km)	92 (g/km)
Fuel Consumption Ice	
MPG (combined)	68.9 mpg
L/100km (combined)	4.1 l/100km
Electric Vehicle Data	
Battery type	Lithium-ion
Total capacity	0.7 kWh
Capacities	
Boot (seats up)	286 litres
Boot (seats down)	947 litres
Fuel tank	36 litres
General	
NCAP Overall	4

....MORE.... For the full details please call us or scan the QR code above

01446 733248

sales@pwmillar.co.uk

P W Millar 148 Port Road East Barry South Glamorgan CF62 9PZ

Whilst every effort has been made to ensure the accuracy of the vehicle specification, some inaccuracies may occasionally occur. It is important that you do not rely solely on this information, but check with a member of the sales staff about any features which may affect your decision to buy the car.