

# PW MILLAR LTD

## ESTABLISHED 1970

2025-25 | CITROEN C5 AIRCROSS

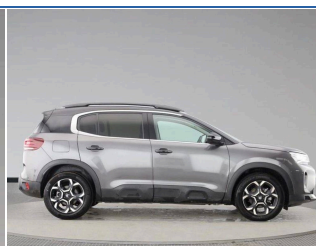
1.5 BlueHDi MAX Edition EAT8 Euro 6 (s/s) 5dr |

Diesel | Automatic | Platinum Grey



<https://www.pwmillar.co.uk>

01446 733248



## £21,999

From **£404** per month PCP

Mileage **1,815 miles**

Fuel **Diesel**

Engine **1.5 litre**

Transmission **Automatic**

Gears **8**

Insurance group **19E**

### SPECIFICATIONS

|                                                                                                                                |                                                                 |                                                                           |
|--------------------------------------------------------------------------------------------------------------------------------|-----------------------------------------------------------------|---------------------------------------------------------------------------|
| DSC (Dynamic Stability Control) and ASR (Electronic Anti-skid System)                                                          | Electric power steering                                         | Tinted row 1 windows and dark tinted row 2, C-Pillar and tailgate windows |
| Dashboard storage area to right of driver, open storage at front of central console, glovebox with smooth opening and lighting | Gloss black colour pack - C5 Aircross                           | Advanced comfort suspension                                               |
| Electronic code immobiliser                                                                                                    | Auxiliary input socket                                          | Wheel chock and towing tool                                               |
| 3 rear 3-point seatbelts (outer seats featuring force limiters)                                                                | Cruise control                                                  | Gloss black longitudinal roof bars                                        |
| Three individual sliding seats with adjustable backrest and flat floor function                                                | Drive assist pack - C5 Aircross/Highway driver assist           | Keyless entry and start                                                   |
| USB A socket (charge only) on rear part of central console                                                                     | 18" Pulsar diamond cut bi tone alloy wheels with Class A+ tyres | ESP including traction control and stability programme                    |
| 10" Touchscreen user interface with citroen connect nav, voice commands, Bluetooth handsfree and audio streaming               | Automatic headlights with welcome and goodbye lighting          | Two open cupholders in central console                                    |
| City camera pack with front and rear parking sensors - C5 Aircross                                                             | Remote central locking + deadlocks                              | FM and DAB digital radio, 6 speakers                                      |
| Hill start assist                                                                                                              | Tailgate                                                        | LED 3rd brake light                                                       |
| 6-way electric adjust driver seat                                                                                              | Interior lighting package - C5 Aircross                         | Anti theft locking wheel nuts                                             |
|                                                                                                                                | Head curtain airbags covering                                   |                                                                           |

### TECHNICAL

|                             |                    |
|-----------------------------|--------------------|
| <b>Performance</b>          |                    |
| 0-100 kmh (62 mph)          | <b>10.6 s</b>      |
| Top speed                   | <b>117 mph</b>     |
| <b>Fuel Consumption Ice</b> |                    |
| MPG (combined)              | <b>54.1 mpg</b>    |
| L/100km (combined)          | <b>5.2 l/100km</b> |
| <b>Capacities</b>           |                    |
| Boot (seats up)             | <b>720 litres</b>  |
| Boot (seats down)           | <b>1630 litres</b> |
| Fuel tank                   | <b>53 litres</b>   |
| <b>General</b>              |                    |
| NCAP Overall                | <b>4</b>           |

....MORE.... For the full details please call us or scan the QR code above

01446 733248

[sales@pwmillar.co.uk](mailto:sales@pwmillar.co.uk)

P W Millar 148 Port Road East Barry South Glamorgan CF62 9PZ

Whilst every effort has been made to ensure the accuracy of the vehicle specification, some inaccuracies may occasionally occur. It is important that you do not rely solely on this information, but check with a member of the sales staff about any features which may affect your decision to buy the car.